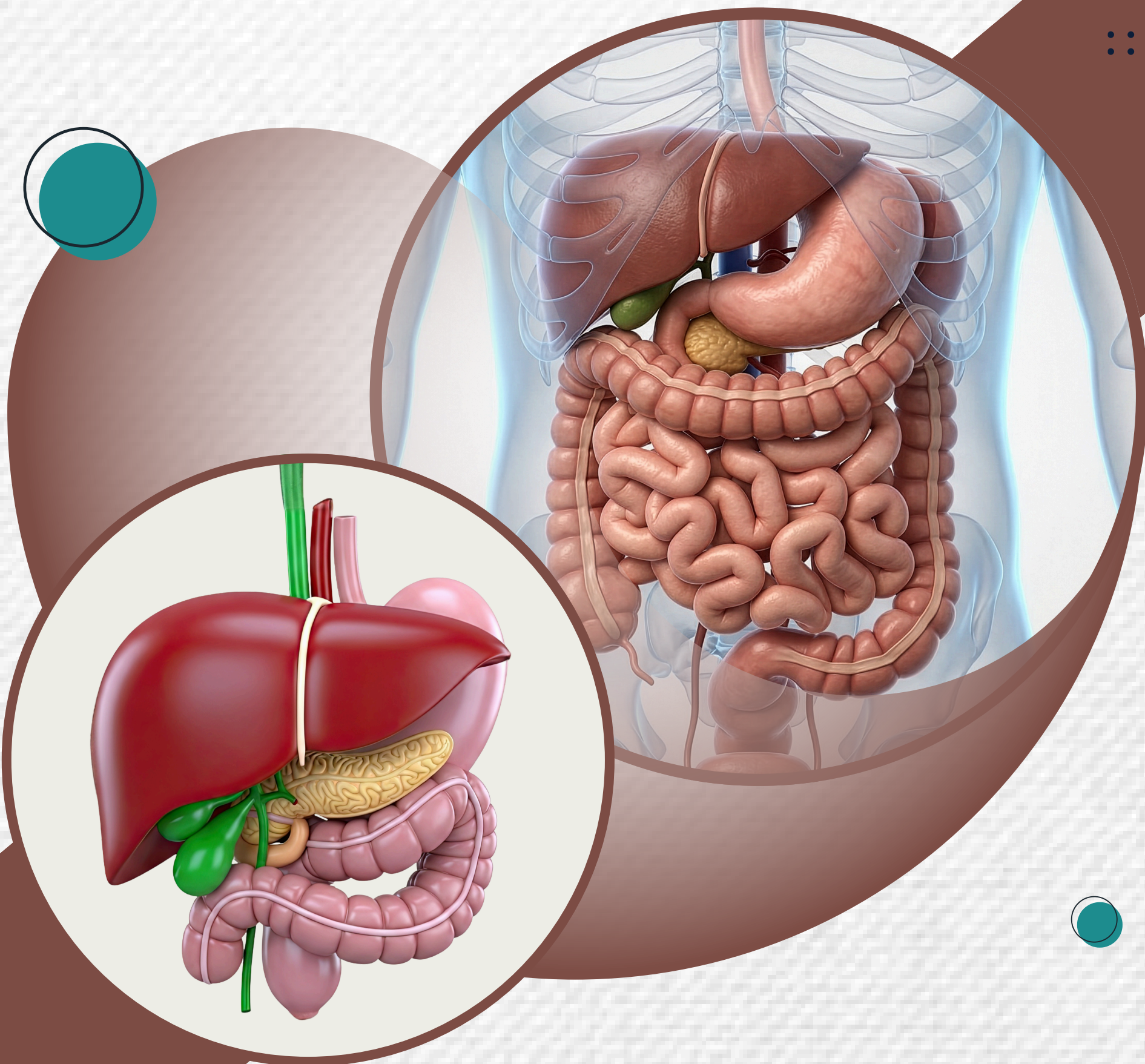




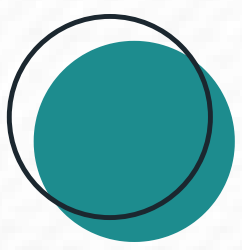
GENOME 24

Gastrointestinal System

Mid Exam 024



WWW.MEDHEMMEH.COM

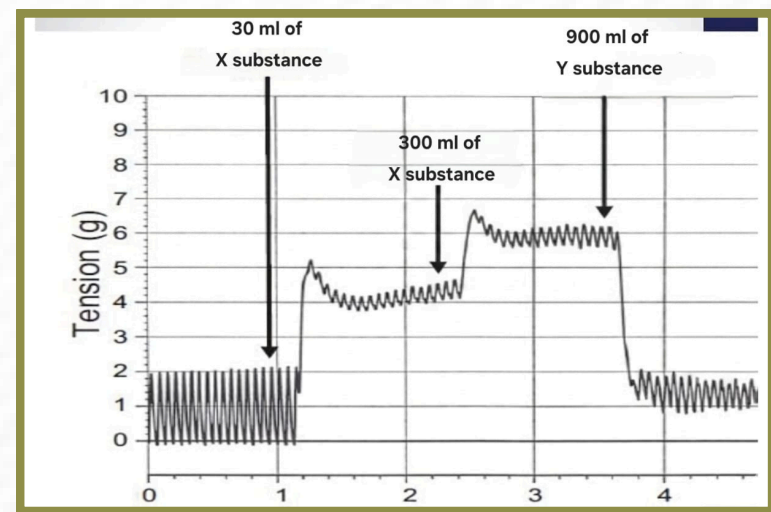


Mid - GI



1. **(Physiology Lab)** About this diagram which of the following sentences is correct?

- A) Drug X increase the tension
- B) Drug X decrease the frequency of the slow waves
- C) Drug Y increase the tension
- D) Both drugs increase the tension
- E) Drug X increase the tension then decrease it



ANSWER: A

2. **(Physiology)** Wrong about Mass contraction ?

- A) Causes feces to be forced to move into the rectum
- B) Facilitated by gastrocolic and duodenocolic reflexes
- C) Present all the day
- D) Mucosal irritation causes it to increase
- E) Begin at transverse colon

ANSWER: C

3. **(Physiology)** All the following about the digestion and absorption of fat are true, EXCEPT?

- A) All absorbed fat is taken away from the villi by blood circulation.
- B) The absorbed fat products will combine with lipoproteins to form chylomicrons.
- C) The digestion of fat is taking place at the shell-core interface of micelles.
- D) Monoglycerides and free fatty acids are transported across the luminal membrane by simple diffusion.

ANSWER: A

4. **(Physiology)** One of the following with regard to fat digestion and absorption is TRUE?

- A) Fat absorption needs specialized Na⁺-dependent carriers
- B) Decrease in lipolytic enzymes results in steatorrhea
- C) Enzymes involved in fat digestion are liposoluble
- D) Absorbed fat forms micelles inside the cytosol of absorptive cells
- E) Most fat is absorbed by the luminal membrane in the form of triglycerides

ANSWER: B



Mid - GI



5. **(Physiology)** Which of the following pairs are related to each other?

- A) High-protein diet: Increase Metabolic rate
- B) Starvation: high release of leptin
- C) G cells : secretion of leptin

ANSWER: A

6. **(Physiology)** Regarding pancreatic secretions, one of the followings is NOT true?

- A) It contains enzymes for digestion of disaccharides
- B) Enzyme secretion is under the control of cholecystokinin (CCK)
- C) HCO_3^- content in pancreatic juice is increased upon vagal stimulation
- D) Secretin hormone can increase secretory activity of duct cells
- E) All pancreatic proteolytic enzymes are released from the pancreas as inactive enzymes

ANSWER: A

7. **(Physiology)** One of the following true with regard to esophageal movements in NOT true

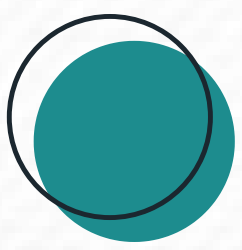
- A) Primary esophageal peristalses are initiated at the pharynx
- B) Relaxation of lower esophageal sphincter is ensured by intrinsic reflexes
- C) The patterns of primary and secondary peristaltic contractions are the same
- D) decreased in the tone of pyloric sphincter is achieved when gastric peristaltic contractions are reaching pyloric region

ANSWER: D

8. **(Physiology)** Which of the following is true regarding the electrical activity of smooth muscle

- A) Parasympathetic stimulation increases the tension of slow waves
- B) Slow wave potential is a mechanical event known as basic electrical rhythm
- C) Spike potentials causes phasic contractions

ANSWER: C



Mid - GI



9. **(Physiology)** Which of the following is true regarding paracrine regulation of HCl secretion?

- A) Somatostatin stimulates HCL secretion
- B) Enterochromaffin-like cells has a role in stimulating H₂ receptor
- C) It is achieved by the release of cholecystokinin (CCK)

ANSWER: B

10. **(Physiology)** Which of the following hormone's secretion is stimulated by the presence of fat in chyme

- A) Gastrin
- B) Cholecystokinin
- C) Secretin

ANSWER: B

11. **(Physiology)** Which of the following is NOT true about salivary gland secretion?

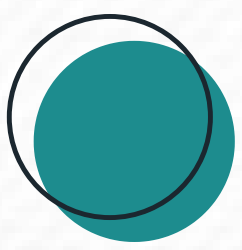
- A) The secretion is controled maily by hormonal control
- B) At low rate of secretion, it contains higher CL⁻ concentration than primary saliva
- C) At high rate of secretion, it contains lower Na⁺ concentration than at low rate
- D) At high rate of secretion, it contains higher HCO₃⁻ concentration than at low rate

ANSWER: B

12. **(Physiology)**

- A)
- B)
- C)
- D)

ANSWER: A



Mid - GI



13. **(Microbiology)** Which of the following wrong regarding the pathogenesis of *C. difficile*?

- A) part of the normal intestinal flora of hospitalized patients
- B) Related to the history of exposure to a health care facility
- C) It is associated with children's under 2 years old
- D) It is associated with unexplained diarrhea and unformed stool

ANSWER: C

14. **(Microbiology)** Which of the following wrong regarding gut microbiota? **(Deleted)**

- A) M cells take up luminal antigens over Peyer patches colon
- B) Health depends on a balanced interaction between the microbiota, epithelial barrier, and mucosal immune system
- C) The gut is the largest and most continuously challenged mucosal surface in the body
- D) The microbiota is distributed incrementally along the GI tract

ANSWER: A

15. **(Microbiology)** A patient had vomiting, nausea, and abdominal cramps after 4 hours of ingesting rice and potato salad. Which of the following is wrong?

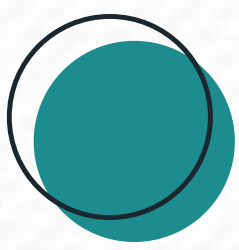
- A) The disease had spread from a food handler
- B) They should have reheated the food to 74° C to destroy the heat-labile enterotoxin
- C) The pathogen is widely distributed in nature.

ANSWER: B

16. **(Histology)** What of the of following was wrong about the histology of Esophagus?

- A) It contains both smooth and skeletal mucsles
- B) Presence of myentric plexus in the submucosa
- C) The mucosa consists of non-keratinized stratified squamous epithelium

ANSWER: B



Mid - GI



17. **(Histology)** Which of the following parts has a higher concentration of taste buds?

- A) Filiform papillae
- B) Circumvallate papillae
- C) Fungiform papillae
- D) Foliate papillae

ANSWER: B

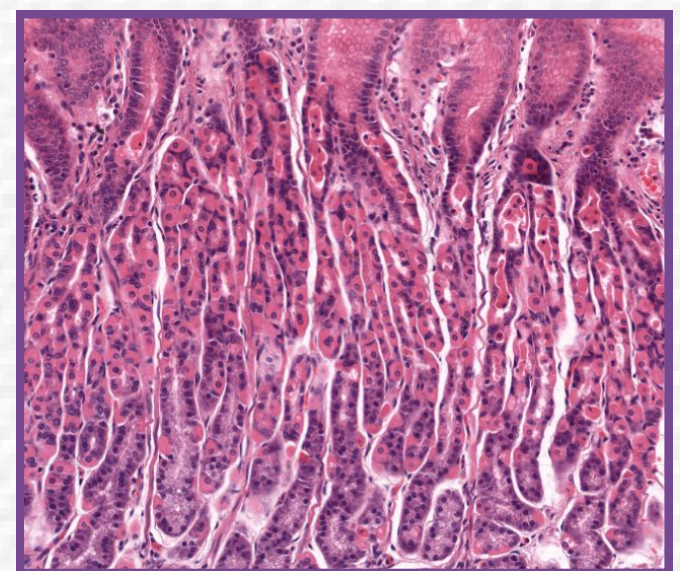
18. **(Histology)** Which of the following is true?

- A) Surface mucous cells secrete acidic mucus
- B) Mucous neck cells secrete acidic mucus

ANSWER: B

19. **(Histology Lab)** The following section is taken from?

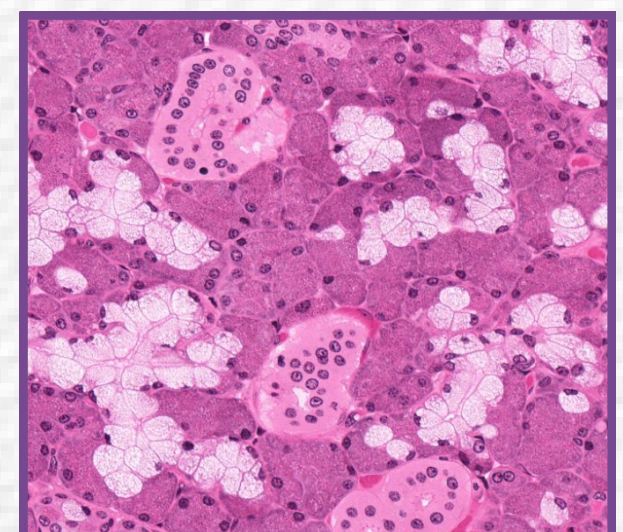
- A) Body of the stomach
- B) Cardia of the stomach
- C) Lining mucosa
- D) Tongue
- E) Esophagus



ANSWER: A

20. **(Histology Lab)** What is the type of the following gland

- A) Serous
- B) Mucous
- C) Mixed mainly Serous
- D) Mixed mainly Mucous
- E) Mixed mainly fat



ANSWER: C



Mid - GI



21. **(Patho)** One of the following from the risk factors of Pigmented stones ?

- A) Hemolytic diseases
- B) Obesity
- C) Hyperlipidemia
- D) Age

ANSWER: A

22. **(Patho)** A patient has passing stools mixed with blood and mucus "currant jelly stool", the patient has intestinal obstruction due to?

- A) Hirschsprung disease
- B) Volvulus
- C) Intussusception
- D) Adhesions.

ANSWER: C

23. **(Patho)** Which one of the following diseases that 100% develops to carcinoma if not treated before the age of 30?

- A) FAP
- B) HNPCC
- C) Peutz-Jeghers syndrome

ANSWER: A

24. **(Patho)** Which one of the following Colonic polyps has a characteristic of mucocutaneous hyperpigmentation observed on the oral mucosa, the lips, the roof of the mouth and the hands.

- A) Inflammatory polyps
- B) Peutz-Jeghers syndrome
- C) juvenile polyposis syndrome
- D) Hyperplastic polyps

ANSWER: B



Mid - GI



25. **(Patho)** The main cause in Mallory Weiss tears that leads to Linear lacerations and hematemesis is?

- A) Alcohol
- B) Forceful prolonged vomiting
- C) Idiopathic

ANSWER: B

26. **(Patho)** Which of the following is true about Barrett esophagus?

- A) Squamous cell metaplasia
- B) Viral esophagitis
- C) Intestinal metaplasia with goblet cells
- D) Can progress to squamous cell carcinoma

ANSWER: C

27. **(Patho)** A 70-year old man present with sudden iron deficiency anemia, which of the following should be suspected first?

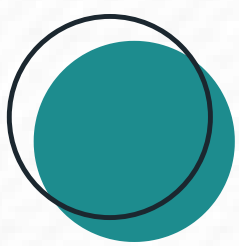
- A) Colon cancer
- B) A problem with his diet
- C) Lactase Deficiency
- D) Chronic bowel inflammation

ANSWER: A

28. **(Patho)** Which one is a complication of ulcerative colitis

- A) Regional enteritis
- B) Toxic megacolon
- C) Cobblestone appearance

ANSWER: B



Mid - GI



29. **(Patho)** Which of the following is more common in ulcerative colitis than Crohn's disease:

- A) non caseating granuloma
- B) Malabsorption
- C) Primary sclerosing cholangitis

ANSWER: C

30. **(Patho)** which of the following is true regarding Celiac disease?

- A) Villous atrophy and intracellular lymphocytosis
- B) Antiendomysial antibody is the most sensitive
- C) Anti tissue transglutaminase antibody is the most specific

ANSWER: A

31. **(Patho)** What is the most common mutation in gastric adenocarcinoma-diffuse type?

- A) APC
- B) CDH1
- C) BRAF
- D) KRAS
- E) Beta-Catenin

ANSWER: B

32. **(Patho)** Which of the following is a complication of chronic H.pylory gastritis?

- A) MALToma
- B) Carcinoid tumor
- C) Pernicious anemia

ANSWER: A



Mid - GI



33.(Patho) Which of the following happens in Autoimmune gastritis?

- A) Increased acid production
- B) Parietal destruction
- C) Increased production of Intrinsic factor
- D) Decreased gastrin levels

ANSWER: B

34.(Patho) Which of the following is true regarding gastric adenocarcinoma?

- A) Most cases are detected early
- B) Diffuse type Develops from precursors
- C) Intestinal-type Develops from precursors
- D) The most important characteristic in prognoses is the grade of the carcinoma

ANSWER: C

35.(Patho) Which of the following is a typical characteristic of Adenoma ?

- A) Serrated architecture
- B) Epithelial dysplasia
- C) Shallow ulcers

ANSWER: B

36.(Patho) Which of the following is a characteristic of Infectious esophagitis caused by Herpes viruses

- A) Shallow ulcerations
- B) Mega cells
- C) Pseudo membranes and hyphae
- D) Nuclear viral inclusions and multinucleated epithelial cells

ANSWER: D

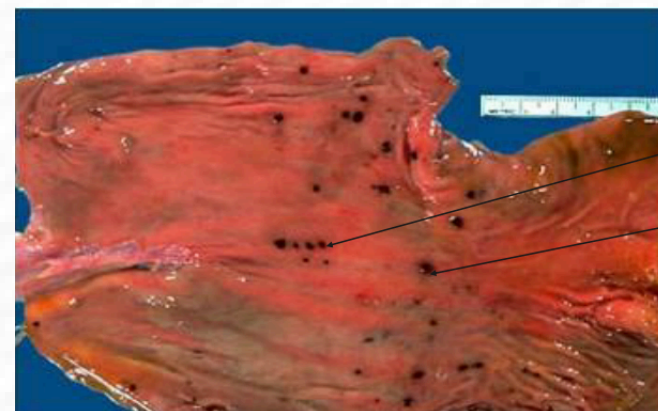


Mid - GI



37. **(Patho Lab)** Regarding the following picture, what is the correct diagnosis?

- A) Acute gastritis
- B) Gastric adenocarcinoma-diffuse type
- C) Autoimmune gastritis
- D) Stress ulcers
- E) Chronic peptic ulcers



ANSWER: D

38. **(Anatomy)**. which of the following innervation supplies the foregut?

- A) superior cervical ganglia
- B) inferior cervical ganglia
- C) celiac ganglia
- D) superior mesenteric ganglia
- E) inferior mesenteric ganglia

ANSWER: C

39. **(Anatomy)** which of the following muscles prevent the air from passing to the stomach

- A) Middle constrictor muscle
- B) Superior constrictor muscle
- C) Cricopharyngeus muscle
- D) Salpingopharyngeus
- E) Stylopharyngeus

ANSWER: C

40. **(Anatomy)** which pouch of the following will be affected from appendicitis rupture?

- A) Morrison pouch
- B) douglas pouch
- C) left
- D) left

ANSWER: A



Mid - GI



41. **(Anatomy)** A Pringle Maneuver was done to a patient (inserting forceps to clamp the free edge) which of the following is wrong

- A) The blood supply to the liver will be interrupted
- B) The blood supply to the spleen won't be interrupted
- C) The blood supply to the stomach will be interrupted

ANSWER: C

42. **(Anatomy)** Which of the following located anterior to esophagus?

- A) Thoracic Duct
- B) Right Recurrent Laryngeal Nerve
- C) Azygos Vein
- D) Left main bronchus

ANSWER: D

43. **(Anatomy)** Which of the following is not true regarding submandibular gland?

- A) The submandibular duct originates from the superficial part
- B) It's Parasympathetic Innervation arises from a branch from the facial nerve
- C) Divided into two parts by the Mylohyoid muscle

ANSWER: A

44. **(Anatomy)** A cut was made by a surgeon in the superior mesenteric artery distal to the origin of the middle colonic artery. Which of the following parts will face ischemia?

- A) Ascending Colon
- B) Transverse Colon
- C) Descending Colon
- D) Appendix

ANSWER: D



Mid - GI



45. **(Anatomy)** Which of the following is true regarding Inguinal Hernias?

- A) The Testicular Veins originates from the Superficial inguinal ring
- B) Superficial inguinal ring is located medial superior to the pubic tubercle
- C) The deep inguinal ring is located in the transversalis abdominis muscle
- D) Ilioinguinal Nerve enters the canal from the deep inguinal ring

ANSWER: B

46. **(Anatomy)** Which of the following is not located posterior to the cecum?

- A) Psoas muscle
- B) Lateral cutaneous nerve
- C) Femoral nerve
- D) Iliacus muscles
- E) Obturator nerve

ANSWER: E

47. **(Anatomy)** Which of the following the root of the mesentery does not cross?

- A) The Second Part of the Duodenum
- B) Jejunum

ANSWER: A

48. **(Anatomy)** Which of the following muscles protrudes the tongue straight out?

- A) Styloglossus
- B) Hyoglossus
- C) Palatoglossus
- D) Genioglossus

ANSWER: D



Mid - GI



49.(Anatomy) Which of the following regarding what lies under the anterior superior iliac spine (ASIS) in rectus sheath is not true?

- A) Two muscles only
- B) Superior and inferior epigastric arteries
- C) Tendinous Intersections are not attached to the anterior wall of the rectus sheath

ANSWER: B

جينوم

شاركنا تعديلاتك للشيت **Click or Scan** ::



Version	Slide No and place of error	Before Correction	After Correction

رسالة من فريق جينوم

إذا أهدست بالضيقة لأن يومك مضى دون إنجاز، فاشغل وقتك بها تستطيع؛ ماشياً، أو جالساً في المجالس، أو حتى وأنت على جنبك... فذلك من إنجازات الھوفاقين. ومن أعظم الإنجازات اليومية: أن تقول

“لا إله إلا الله وحده لا شريك له، له الملك وله الحمد، وهو على كل شيء قدير”

“خير الناس أنفعهم للناس”